



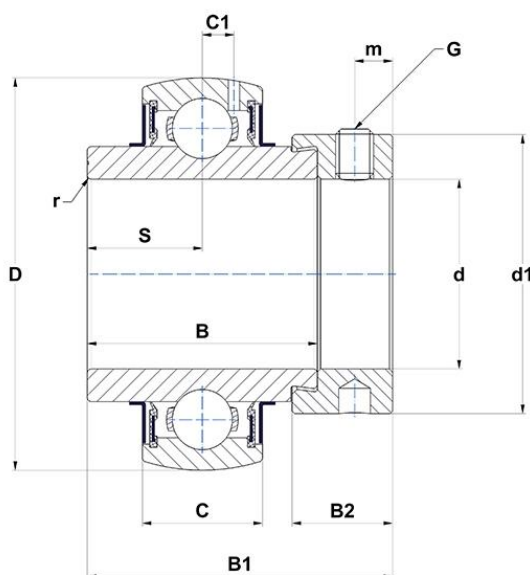
Technical data

EX308-24G2

Insert bearings

Spherical outer diameter, fixing by eccentric locking collar, seal with slinger

VISUAL (S)



PRODUCT DEFINITION

B - Width of Inner Ring	41,3 mm
B1 - Overall width IR (with eccent. locking collar/adapt. sleeve)	57,1 mm
B2 - Width of eccent. Lock. collar/nut+washer of adapter sleeve	20,6 mm
C - Width of Outer Ring	28 mm
C1 - Distance center of OR to center of lubrication zone	8,5 mm
d - Shaft diameter	38,1 mm
d1 - Outer dia of eccent. Lock. collar / nut of adapter sleeve	63,5 mm
D - Outer diameter of OR	90 mm

PRODUCT DEFINITION

G - Set screw size	3/8-24UNF
m - Distance to set screw	8 mm
r - Radius Inner Ring	2
S - Dist. cent. of raceway to face IR on side opp. lock. device	19,8 mm
SW - Wrench size	4,763 mm
Brand	SNR

PRODUCT PERFORMANCE

C - Dynamic load rating	40,56 kN
C0 - Static load rating	24 kN
Operating temperature min.	-20 °C
Operating temperature max.	100 °C

OTHER FEATURES

Mass	1,13 kg
Recommended tightening torque for set screw	16.8 N-m