

The general purpose bearing – iglidur[®] G: the most sold iglidur[®] bearing worldwide

- Over 650 sizes available from stock
- High wear resistance
- Resistance to dust and dirt
- Economic
- Lubrication and maintenance free



iglidur® G bearings cover an extremely wide range of different requirements – they are truly "all round". Typical applications include medium to high loads, medium sliding speeds and medium temperatures. Typical applications include medium to high loads, medium sliding speeds and medium temperatures.



When to use it?

- Economical all-round performance bearing
- For low to average surface speeds
- When the bearing needs to run on different shaft materials
- For oscillating and rotational movements



When not to use it?

- When mechanical reaming of the wall surface is necessary
 - ▶ iglidur® M250, page 111
- When the highest wear resistance is required
 - ▶ iglidur® W300, page 121
- When universal chemical resistance is required
 - ▶ iglidur® X, page 133
- If temperatures are constantly higher than +130 °C
 - ▶ iglidur® H, page 283
 - ▶ iglidur® X, page 133
 - ▶ iglidur® H370, page 299
- For underwater use
 - ▶ iglidur® H370, page 299



Available from stock

Detailed information about delivery time online.



Block pricing online

No minimum order value. From batch size 1



Typical application areas

- Agricultural machines
- Construction machinery
- Machine building
- Sports and leisure
- Automotive
- Mechatronics



max. +130 °C
min. -40 °C



Ø 1.5–195 mm
more dimensions
on request



Inch dimensions available
▶ From page 1183

Material properties table

General properties	Unit	iglidur® G	Testing method
Density	g/cm ³	1.46	
Colour		dark grey	
Max. moisture absorption at +23 °C/50 % r.h.	% weight	0.7	DIN 53495
Max. water absorption	% weight	4.0	
Coefficient of sliding friction, dynamic against steel	μ	0.08–0.15	
pv value, max. (dry)	MPa · m/s	0.42	
Mechanical properties			
Modulus of elasticity	MPa	7,800	DIN 53457
Tensile strength at +20 °C	MPa	210	DIN 53452
Compressive strength	MPa	78	
Max. recommended surface pressure (+20 °C)	MPa	80	
Shore-D hardness		81	DIN 53505
Physical and thermal properties			
Max. long term application temperature	°C	+130	
Max. short term application temperature	°C	+220	
Min. application temperature	°C	-40	
Thermal conductivity	W/m · K	0.24	ASTM C 177
Coefficient of thermal expansion (at +23 °C)	K ⁻¹ · 10 ⁻⁵	9	DIN 53752
Electrical properties			
Specific volume resistance	Ωcm	> 10 ¹³	DIN IEC 93
Surface resistance	Ω	> 10 ¹¹	DIN 53482

Table 01: Material properties table

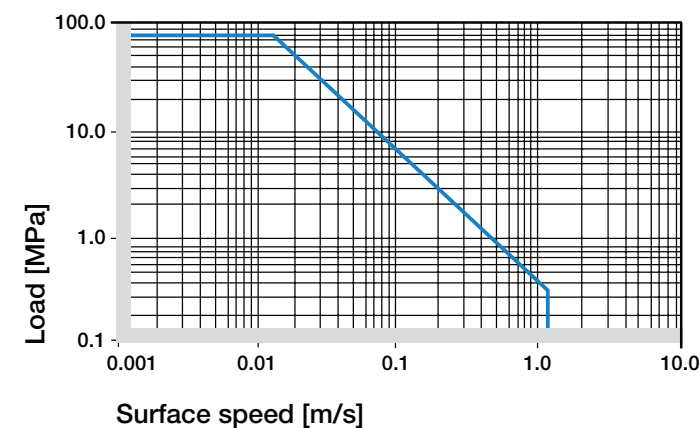


Diagram 01: Permissible pv values for iglidur® G bearings with a wall thickness of 1 mm dry running against a steel shaft, at +20 °C, mounted in a steel housing

Moisture absorption

The moisture absorption of iglidur® G plain bearings is approximately 0.7 % in ambient conditions. The saturation limit submerged in water is 4%. This must be taken into account along with other environmental influences.

▶ Diagram, www.igus.eu/g-moisture

Vacuum

iglidur® G plain bearings outgas in a vacuum. Use in vacuum is only possible with dehumidified bearings.

Radiation resistance

Plain bearings made from iglidur® G are resistant to radiation up to an intensity of 3 · 10² Gy.

UV resistance

iglidur® G plain bearings are permanently resistant to UV radiation.

Medium	Resistance
Alcohol	+ to 0
Hydrocarbons	+
Greases, oils without additives	+
Fuels	+
Diluted acids	0 to -
Strong acids	-
Diluted alkalines	+
Strong alkalines	0

+ resistant 0 conditionally resistant - not resistant
All data given at room temperature [+20 °C]

Table 02: Chemical resistance

▶ Chemical table, page 1226

iglidur® G is the decathlete among iglidur® materials. It performs exceedingly well in all technical disciplines and is the classic all-rounder, primarily with respect to the overall general, mechanical, thermal and tribological specifications.

Mechanical properties

With increasing temperatures, the compressive strength of iglidur® G plain bearings decreases. The diagram 02 shows this inverse relationship. However, at the longterm maximum temperature of +130 °C the permissible surface pressure is almost 35 MPa. The recommended maximum surface pressure is a mechanical material parameter. No conclusions regarding the tribological properties can be drawn from this.

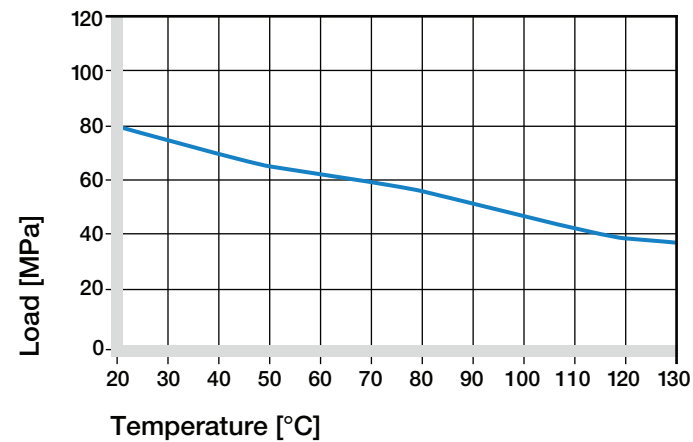


Diagram 02: Recommended maximum surface pressure of as a function of temperature (80 MPa at +20 °C)

Diagram 03 shows the elastic deformation of iglidur® G at radial loads. The plastic deformation is minimal up to a pressure of approximately 100 MPa. However, it is also dependent on the service time.

► Surface pressure, page 63

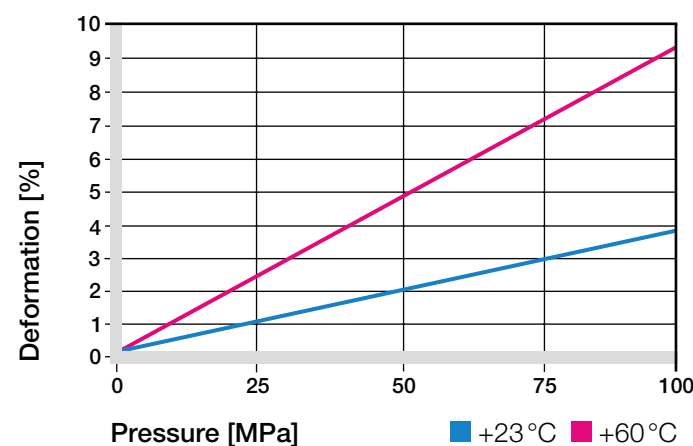


Diagram 03: Deformation under pressure and temperature

Permissible surface speeds

iglidur® G has been developed for low to medium surface speeds. The maximum values shown in table 03 can only be achieved at low pressures. At the given speeds, friction can cause a temperature increase to maximum permissible levels. In practice, though, this temperature level is rarely reached due to varying application conditions.

► Surface speed, page 65

m/s	Rotating	Oscillating	Linear
Constant	1	0.7	4
Short term	2	1.4	5

Table 03: Maximum surface speeds

Temperatures

The ambient temperatures greatly influence the wear performance of plastic bearings. The ambient application temperature has a direct impact on bearing wear, an increase in temperature results in an increase in wear. With increasing temperatures, the wear increases and this effect is significant when temperatures rise over +120 °C. At temperatures over +80 °C an additional securing is required.

► Application temperatures, page 66
► Additional securing, page 67

Friction and wear

Similar to wear resistance, the coefficient of friction μ also changes with the speed and load (diagrams 04 and 05).

► Coefficients of friction and surfaces, page 68
► Wear resistance, page 69

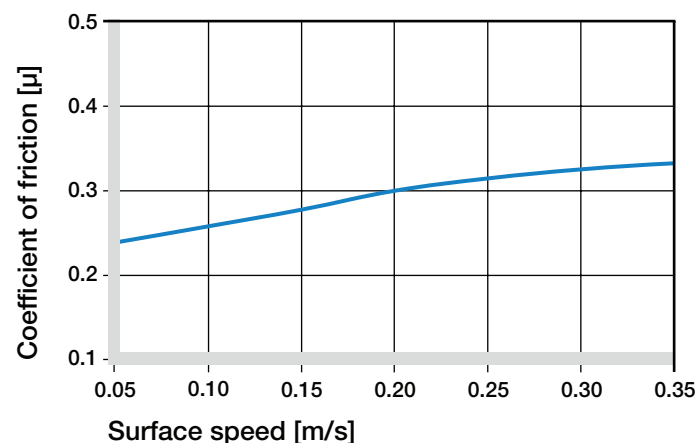


Diagram 04: Coefficient of friction as a function of the surface speed, p = 0.75 MPa

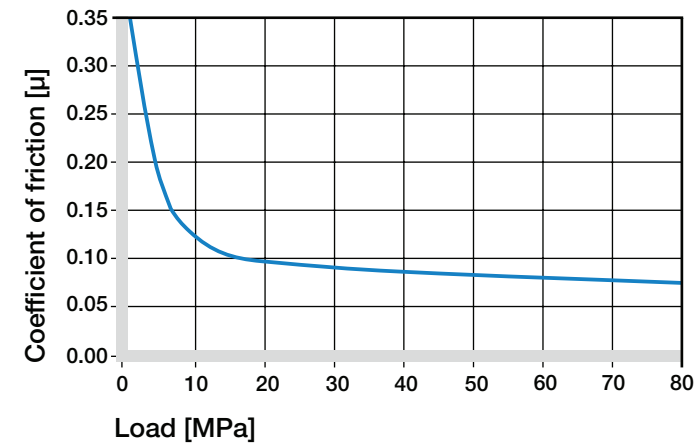


Diagram 05: Coefficient of friction as a function of the pressure, v = 0.01 m/s

Shaft materials

Friction and wear are to a large extent also highly dependant on the shaft materials. Shafts that are too smooth, increase both the coefficient of friction and the wear of the bearing. For iglidur® G a ground surface with an average roughness Ra = 0.8 μm is recommended. Diagram 06 shows results of testing different shaft materials with plain bearings made from iglidur® G. It is important to notice that with increasing loads, the recommended hardness of the shaft increases. The "soft" shafts tend to wear more easily and thus affect the clearance of the overall system. If the loads exceed 2 MPa it is important to recognise that the wear rate (the gradient of the curves) clearly decreases with the hard shaft materials. If the shaft material you plan to use is not contained in this list, please contact us.

► Shaft materials, page 71

iglidur® G	Dry	Greases	Oil	Water
C. o. f. μ	0.08–0.15	0.09	0.04	0.04

Table 04: Coefficient of friction against steel (Ra = 1 μm, 50 HRC)

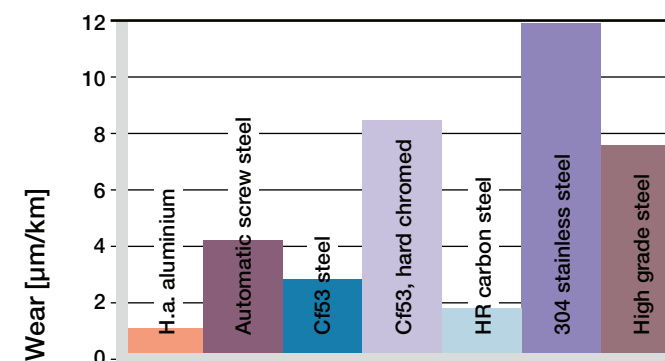


Diagram 06: Wear, rotating with different shaft materials, p = 1 MPa, v = 0.3 m/s

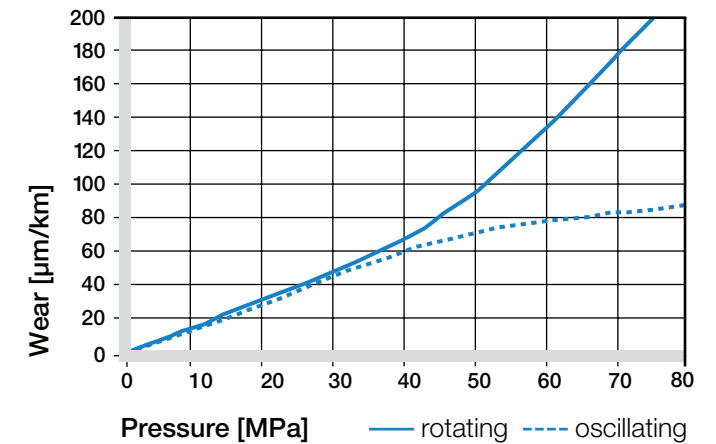


Diagram 07: Wear for oscillating and rotating applications with shaft material Cf53 hardened and ground steel, as a function of the pressure

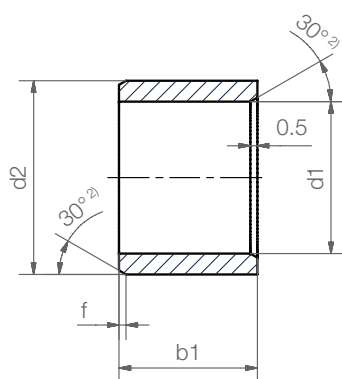
Installation tolerances

iglidur® G plain bearings are standard bearings for shafts with h-tolerance (recommended minimum h9). The bearings are designed for pressfit into a housing machined to a H7 tolerance. After being assembled into a nominal size housing, in standard cases the inner diameter automatically adjusts to the E10 tolerances. For particular dimensions the tolerance differs depending on the wall thickness (please see product range table).

► Testing methods, page 75

Diameter d1 [mm]	Shaft h9 [mm]	iglidur® G E10 [mm]	Housing H7 [mm]
up to 3	0–0.025	+0.014 +0.054	0 +0.010
> 3 to 6	0–0.030	+0.020 +0.068	0 +0.012
> 6 to 10	0–0.036	+0.025 +0.083	0 +0.015
> 10 to 18	0–0.043	+0.032 +0.102	0 +0.018
> 18 to 30	0–0.052	+0.040 +0.124	0 +0.021
> 30 to 50	0–0.062	+0.050 +0.150	0 +0.025
> 50 to 80	0–0.074	+0.060 +0.180	0 +0.030
> 80 to 120	0–0.087	+0.072 +0.212	0 +0.035
>120 to 180	0–0.100	+0.085 +0.245	0 +0.040

Table 05: Important tolerances for plain bearings according to ISO 3547-1 after pressfit



Order key

Type	Dimensions
G S M	-0103-02
iglidur® material	
Form S	
Metric	
Inner-Ø d1 [mm]	
Outer-Ø d2 [mm]	
Length b1 [mm]	



Dimensions according to ISO 3547-1 and special dimensions

²⁾ thickness < 1 mm, chamfer = 20°

Chamfer in relation to the d1

d1 [mm]:	Ø 1-6	Ø 6-12	Ø 12-30	Ø > 30
f [mm]:	0.3	0.5	0.8	1.2

Dimensions [mm]

d1	d1- Tolerance ³⁾	d2	b1 h13	Part No.
1.5		3.0	2.0	GSM-0103-02
2.0		3.5	3.0	GSM-0203-03
2.5	+0.014	4.5	5.0	GSM-02504-05
3.0	+0.054	4.5	3.0	GSM-0304-03
3.0		4.5	5.0	GSM-0304-05
3.0		4.5	6.0	GSM-0304-06
4.0		5.5	4.0	GSM-0405-04
4.0	+0.020	5.5	6.0	GSM-0405-06
4.5	+0.068	6.0	8.0	GSM-0406-08
4.0		7.0	5.5	GSM-0407-05
5.0		6.0	4.6	GSM-0506-046
5.0	+0.010	6.0	5.0	GSM-0506-05
5.0	+0.040	6.0	7.0	GSM-0506-07
5.0		7.0	5.0	GSM-0507-05
5.0	+0.020	7.0	7.0	GSM-0507-07
5.0	+0.068	7.0	8.0	GSM-0507-08
5.0		7.0	10.0	GSM-0507-10
6.0		7.0	6.0	GSM-0607-06
6.0		7.0	12.0	GSM-0607-12
6.0	+0.010	7.0	17.0	GSM-0607-17
6.0	+0.040	7.0	17.5	GSM-0607-17.5
6.0		7.0	19.0	GSM-0607-19
6.0		8.0	1.5	GSM-0608-015
6.0		8.0	2.5	GSM-0608-025
6.0	+0.020	8.0	3.0	GSM-0608-03
6.0	+0.068	8.0	4.0	GSM-0608-04
6.0		8.0	5.0	GSM-0608-05
6.0		8.0	5.5	GSM-0608-055

d1	d1- Tolerance ³⁾	d2	b1 h13	Part No.
6.0		8.0	6.0	GSM-0608-06
6.0		8.0	8.0	GSM-0608-08
6.0	+0.020	8.0	9.5	GSM-0608-09
6.0	+0.068	8.0	10.0	GSM-0608-10
6.0		8.0	11.8	GSM-0608-11
6.0		8.0	13.8	GSM-0608-13
7.0	+0.013	8.0	10.0	GSM-0708-10
7.0	+0.049	8.0	19.0	GSM-0708-19
7.0		9.0	8.0	GSM-0709-08
7.0	+0.025	9.0	9.0	GSM-0709-09
7.0	+0.083	9.0	10.0	GSM-0709-10
7.0		9.0	12.0	GSM-0709-12
8.0		9.0	5.0	GSM-0809-05
8.0	+0.013	9.0	6.0	GSM-0809-06
8.0	+0.049	9.0	8.0	GSM-0809-08
8.0		9.0	12.0	GSM-0809-12
8.0		10.0	5.0	GSM-0810-05
8.0		10.0	6.0	GSM-0810-06
8.0		10.0	6.8	GSM-0810-07
8.0		10.0	8.0	GSM-0810-08
8.0		10.0	10.0	GSM-0810-10
8.0	+0.025	10.0	12.0	GSM-0810-12
8.0	+0.083	10.0	13.8	GSM-0810-13
8.0		10.0	14.0	GSM-0810-14
8.0		10.0	15.0	GSM-0810-15
8.0		10.0	16.0	GSM-0810-16
8.0		10.0	18.0	GSM-0810-18
8.0		10.0	20.0	GSM-0810-20

³⁾ after pressfit. Testing methods ► Page 75

Dimensions [mm]

d1	d1- Tolerance ³⁾	d2	b1 h13	Part No.
8.0	+0.025	10.0	22.0	GSM-0810-22
8.0	+0.083	10.1	25.0	GSM-0810-25
8.0	+0.040	12.0	9.0	GSM-0812-09
8.0	+0.130			
9.0	+0.013	10.0	12.0	GSM-0910-12
9.0	+0.049	10.0	16.0	GSM-0910-16
9.0	+0.025	11.0	6.0	GSM-0911-06
9.0	+0.083	11.0	20.0	GSM-0911-20
10.0		11.0	6.0	GSM-1011-06
10.0		11.0	7.0	GSM-1011-07
10.0	+0.013	11.0	10.0	GSM-1011-10
10.0	+0.049	11.0	20.0	GSM-1011-20
10.0		11.0	25.0	GSM-1011-25
10.0		11.0	30.0	GSM-1011-30
10.0		12.0	4.0	GSM-1012-04
10.0		12.0	4.5	GSM-1012-045
10.0		12.0	5.0	GSM-1012-05
10.0		12.0	6.0	GSM-1012-06
10.0		12.0	7.0	GSM-1012-07
10.0		12.0	8.0	GSM-1012-08
10.0	+0.025	12.0	9.0	GSM-1012-09
10.0	+0.083	12.0	10.0	GSM-1012-10
10.0		12.0	12.0	GSM-1012-12
10.0		12.0	14.0	GSM-1012-14
10.0		12.0	15.0	GSM-1012-15
10.0		12.0	17.0	GSM-1012-17
10.0		12.0	20.0	GSM-1012-20
10.0		13.0	13.5	GSM-1013-13
10.0	+0.025	14.0	10.0	GSM-1014-10
10.0	+0.115	14.0	20.0	GSM-1014-20
10.0	+0.040	16.0	10.0	GSM-1016-10
10.0	+0.130			
12.0		13.0	4.7	GSM-1213-047
12.0	+0.016	13.0	10.0	GSM-1213-10
12.0	+0.059	13.0	12.0	GSM-1213-12
12.0		13.0	15.0	GSM-1213-15
12.0		14.0	4.0	GSM-1214-04
12.0		14.0	5.0	GSM-1214-05
12.0		14.0	6.0	GSM-1214-06
12.0		14.0	8.0	GSM-1214-08
12.0	+0.032	14.0	10.0	GSM-1214-10
12.0	+0.102	14.0	12.0	GSM-1214-12
12.0		14.0	14.0	GSM-1214-14
12.0		14.0	15.0	GSM-1214-15
12.0		14.0	20.0	GSM-1214-20

³⁾ after pressfit. Testing methods ► Page 75

d1	d1- Tolerance ³⁾	d2	b1 h13	Part No.
12.0		14.0	25.0	GSM-1214-25
12.0	+0.032	15.0	6.0	GSM-1215-06
12.0	+0.102	15.0	22.0	GSM-1215-22
12.0	+0.050	16.0	10.0	GSM-1216-10
12.0	+0.160	16.0	20.0	GSM-1216-20
13.0		15.0	7.0	GSM-1315-070
13.0		15.0	7.5	GSM-1315-075
13.0		15.0	10.0	GSM-1315-10
13.0		15.0	15.0	GSM-1315-15
13.0		15.0	20.0	GSM-1315-20
13.0		15.0	25.0	GSM-1315-25
14.0		16.0	3.0	GSM-1416-03
14.0	+0.032	16.0	6.0	GSM-1416-06
14.0	+0.102	16.0	8.0	GSM-1416-08
14.0		16.0	10.0	GSM-1416-10
14.0		16.0	12.0	GSM-1416-12
14.0		16.0	15.0	GSM-1416-15
14.0		16.0	20.0	GSM-1416-20
14.0		16.0	25.0	GSM-1416-25
14.0		16.0	45.0	GSM-1416-45
15.0	+0.016	16.0	10.0	GSM-1516-10
15.0	+0.059	16.0	15.0	GSM-1516-15
15.0		17.0	4.0	GSM-1517-04
15.0		17.0	10.0	GSM-1517-10
15.0		17.0	12.0	GSM-1517-12
15.0		17.0	15.0	GSM-1517-15
15.0		17.0	20.0	GSM-1517-20
15.0		17.0	25.0	GSM-1517-25
16.0		18.0	5.5	GSM-1618-055
16.0		18.0	8.0	GSM-1618-08
16.0	+0.032	18.0	10.0	GSM-1618-10
16.0	+0.102	18.0	12.0	GSM-1618-12
16.0		18.0	13.5	GSM-1618-13.5
16.0		18.0	15.0	GSM-1618-15
16.0		18.0	20.0	GSM-1618-20
16.0		18.0	25.0	GSM-1618-25
16.0		18.0	30.0	GSM-1618-30
16.0		18.0	38.5	GSM-1618-38.5
16.0		18.0	50.0	GSM-1618-50
17.0		19.0	15.0	GSM-1719-15
18.0	+0.016	19.0	15.0	GSM-1819-15
18.0	+0.059			
18.0	+0.032	20.0	6.0	GSM-1820-06
18.0	+0.102	20.0	10.0	GSM-1820-10
18.0		20.0	12.0	GSM-1820-12

Dimensions [mm]

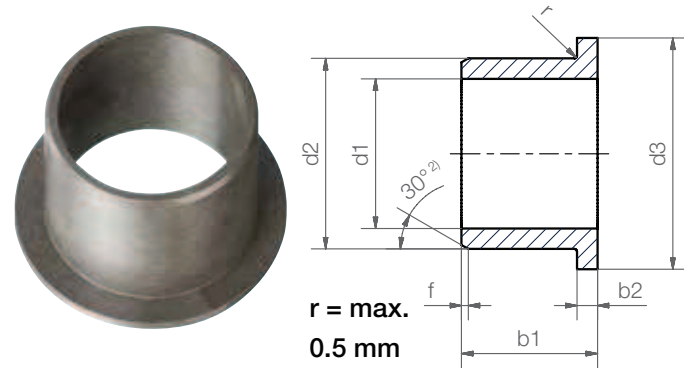
d1	d1- Tolerance ³⁾	d2	b1 h13	Part No.	d1	d1- Tolerance ³⁾	d2	b1 h13	Part No.
18.0		20.0	15.0	GSM-1820-15	24.0		27.0	20.0	GSM-2427-20
18.0		20.0	20.0	GSM-1820-20	24.0	+0.040	27.0	24.0	GSM-2427-24
18.0	+0.032	20.0	25.0	GSM-1820-25	24.0	+0.124	27.0	25.0	GSM-2427-25
18.0	+0.102	20.0	34.0	GSM-1820-34	24.0		27.0	30.0	GSM-2427-30
18.0		20.0	38.0	GSM-1820-38	25.0	+0.020	26.0	23.0	GSM-2526-23
18.0		20.0	45.0	GSM-1820-45	25.0	+0.072	26.0	25.0	GSM-2526-25
18.0		22.0	30.0	GSM-1822-30	25.0		28.0	12.0	GSM-2528-12
19.0	+0.040	22.0	6.0	GSM-1922-06	25.0		28.0	15.0	GSM-2528-15
19.0	+0.124	22.0	28.0	GSM-1922-28	25.0		28.0	20.0	GSM-2528-20
19.0		22.0	35.0	GSM-1922-35	25.0		28.0	24.0	GSM-2528-24
20.0	+0.020	21.0	20.0	GSM-2021-20	25.0		28.0	25.0	GSM-2528-25
20.0	+0.072	21.0	20.0	GSM-2021-20	25.0		28.0	30.0	GSM-2528-30
20.0		22.0	3.0	GSM-2022-03	25.0		28.0	35.0	GSM-2528-35
20.0		22.0	8.0	GSM-2022-08	25.0	+0.040	28.0	50.0	GSM-2528-50
20.0		22.0	10.5	GSM-2022-105	26.0	+0.124	30.0	16.0	GSM-2630-16
20.0		22.0	15.0	GSM-2022-15	27.0		30.0	5.0	GSM-2730-05
20.0		22.0	20.0	GSM-2022-20	28.0		32.0	10.5	GSM-2832-105
20.0		22.0	22.0	GSM-2022-22	28.0		32.0	12.0	GSM-2832-12
20.0		22.0	28.0	GSM-2022-28	28.0		32.0	15.0	GSM-2832-15
20.0		22.0	30.0	GSM-2022-30	28.0		32.0	20.0	GSM-2832-20
20.0		22.0	47.0	GSM-2022-47	28.0		32.0	23.0	GSM-2832-23
20.0		23.0	4.5	GSM-2023-045	28.0		32.0	25.0	GSM-2832-25
20.0		23.0	10.0	GSM-2023-10	28.0		32.0	30.0	GSM-2832-30
20.0		23.0	15.0	GSM-2023-15	28.0	+0.065	35.0	19.0	GSM-2835-19
20.0		23.0	20.0	GSM-2023-20	28.0	+0.195	35.0	28.0	GSM-2835-28
20.0		23.0	24.0	GSM-2023-24	29.0	+0.040	33.0	6.0	GSM-2933-06
20.0	+0.040	23.0	25.0	GSM-2023-25	29.0	+0.124	33.0	6.0	GSM-2933-06
20.0	+0.124	23.0	30.0	GSM-2023-30	30.0	+0.020	31.0	5.0	GSM-3031-05
20.0		23.0	35.0	GSM-2023-35	30.0	+0.072	31.0	12.0	GSM-3031-12
22.0		24.0	8.0	GSM-2224-08	30.0		31.0	30.0	GSM-3031-30
22.0		24.0	10.0	GSM-2224-10	30.0		34.0	12.0	GSM-3034-12
22.0		24.0	12.0	GSM-2224-12	30.0		34.0	15.0	GSM-3034-15
22.0		24.0	15.0	GSM-2224-15	30.0		34.0	20.0	GSM-3034-20
22.0		24.0	17.0	GSM-2224-17	30.0		34.0	24.0	GSM-3034-24
22.0		24.0	20.0	GSM-2224-20	30.0	+0.040	34.0	25.0	GSM-3034-25
22.0		24.0	30.0	GSM-2224-30	30.0	+0.124	34.0	30.0	GSM-3034-30
22.0		24.0	48.0	GSM-2224-48	30.0		34.0	35.0	GSM-3034-35
22.0		25.0	15.0	GSM-2225-15	30.0		34.0	40.0	GSM-3034-40
22.0		25.0	20.0	GSM-2225-20	30.0		34.0	52.5	GSM-3034-525
22.0		25.0	25.0	GSM-2225-25	32.0		36.0	15.0	GSM-3236-15
22.0		25.0	30.0	GSM-2225-30	32.0		36.0	20.0	GSM-3236-20
22.0		25.0	38.5	GSM-2225-38.5	32.0	+0.050	36.0	30.0	GSM-3236-30
24.0	+0.020 +0.072	25.0	25.0	GSM-2425-25	32.0	+0.150	36.0	40.0	GSM-3236-40
24.0	+0.040	27.0	6.0	GSM-2427-06	35.0		39.0	14.0	GSM-3539-14
24.0	+0.124	27.0	15.0	GSM-2427-15	35.0		39.0	20.0	GSM-3539-20

³⁾ after pressfit. Testing methods ► Page 75

Dimensions [mm]

d1	d1- Tolerance ³⁾	d2	b1 h13	Part No.	d1	d1- Tolerance ³⁾	d2	b1 h13	Part No.
35.0		39.0	25.0	GSM-3539-25	60.0		65.0	40.0	GSM-6065-40
35.0		39.0	30.0	GSM-3539-30	60.0	+0.060	65.0	50.0	GSM-6065-50
35.0		39.0	40.0	GSM-3539-40	60.0	+0.180	65.0	60.0	GSM-6065-60
35.0		39.0	50.0	GSM-3539-50	60.0		65.0	70.0	GSM-6065-70
35.0		41.0	50.0	GSM-3541-50	62.0	+0.100	67.0	35.0	GSM-6267-35
36.0		40.0	20.0	GSM-3640-20	62.0	+0.250	67.0	35.0	GSM-6267-35
37.0		41.0	20.0	GSM-3741-20	62.0		67.0	72.0	GSM-6267-72
38.0		42.0	25.0	GSM-3842-25	65.0		70.0	30.0	GSM-6570-30
40.0		44.0	10.0	GSM-4044-10	65.0		70.0	50.0	GSM-6570-50
40.0		44.0	16.5	GSM-4044-16	65.0		70.0	104.0	GSM-6570-104
40.0		44.0	20.0	GSM-4044-20	68.0		73.0	60.0	GSM-6873-60
40.0		44.0	30.0	GSM-4044-30	70.0	+0.060	75.0	60.0	GSM-7075-60
40.0		44.0	40.0	GSM-4044-40	72.0	+0.180	77.0	24.5	GSM-7277-24.5
40.0	+0.050	44.0	50.0	GSM-4044-50	72.0		77.0	76.0	GSM-7277-76
40.0	+0.150	44.0	52.5	GSM-4044-525	75.0		80.0	40.0	GSM-7580-40
42.0		46.0	40.0	GSM-4246-40	75.0		80.0	60.0	GSM-7580-60
44.0		48.0	20.0	GSM-4448-20	80.0		85.0	60.0	GSM-8085-60
45.0		50.0	10.0	GSM-4550-10	80.0		85.0	100.0	GSM-8085-100
45.0		50.0	22.0	GSM-4550-22	85.0		90.0	100.0	GSM-8590-100
45.0		50.0	23.5	GSM-4550-235	90.0		95.0	100.0	GSM-9095-100
45.0		50.0	30.0	GSM-4550-30	95.0		100.0	100.0	GSM-95100-100
45.0		50.0	38.0	GSM-4550-38	100.0		105.0	21.5	GSM-100105-21.5
45.0		50.0	40.0	GSM-4550-40	100.0	+0.072	105.0	30.0	GSM-100105-30
45.0		50.0	50.0	GSM-4550-50	100.0	+0.212	105.0	32.0	GSM-100105-32
50.0		55.0	20.0	GSM-5055-20	100.0		105.0	100.0	GSM-100105-100
50.0		55.0	25.0	GSM-5055-25	105.0		110.0	100.0	GSM-105110-100
50.0		55.0	30.0	GSM-5055-30	110.0		115.0	100.0	GSM-110115-100
50.0		55.0	40.0	GSM-5055-40	120.0		125.0	100.0	GSM-120125-100
50.0		55.0	50.0	GSM-5055-50	125.0		130.0	100.0	GSM-125130-100
52.0		57.0	20.0	GSM-5257-20	130.0		135.0	100.0	GSM-130135-100
55.0		60.0	20.0	GSM-5560-20	135.0	+0.085	140.0	80.0	GSM-135140-80
55.0	+0.060	60.0	40.0	GSM-5560-40	140.0	+0.245	145.0	100.0	GSM-140145-100
55.0	+0.180	60.0	50.0	GSM-5560-50	140.0		145.0	104.0	GSM-140145-104
55.0		60.0	60.0	GSM-5560-60	150.0		155.0	100.0	GSM-150155-100
60.0		65.0	30.0	GSM-6065-30					

³⁾ after pressfit. Testing methods ► Page 75



²⁾ thickness < 1 mm, chamfer = 20°

Chamfer in relation to the d1

d1 [mm]:	Ø 1-6	Ø 6-12	Ø 12-30	Ø > 30
f [mm]:	0.3	0.5	0.8	1.2

Dimensions [mm]

d1	d1- Tolerance ³⁾	d2	d3 d13	b1 h13	b2 -0.14	Part No.
3.0		4.5	7.5	2.0	0.5	GFM-0304-02
3.0	+0.014	4.5	7.5	2.7	0.75	GFM-0304-0275
3.0	+0.054	4.5	7.5	3.0	0.75	GFM-0304-03
3.0		4.5	7.5	5.0	0.75	GFM-0304-05
3.0		4.5	7.0	5.0	0.75	GFM-030407-05
4.0	+0.010	5.0	9.5	4.0	0.5	GFM-04050-04
4.0	+0.040	5.0	9.5	6.0	0.5	GFM-04050-06
4.0		5.5	9.5	2.5	0.75	GFM-0405-0255
4.0	+0.020	5.5	9.5	3.0	0.75	GFM-0405-03
4.0	+0.068	5.5	9.5	4.0	0.75	GFM-0405-04
4.0		5.5	9.5	6.0	0.75	GFM-0405-06
4.0		5.5	8.0	10.0	1.0	GFM-040508-10
5.0		6.0	10.0	3.5	0.5	GFM-0506-035
5.0	+0.010	6.0	10.0	4.0	0.5	GFM-0506-04
5.0	+0.040	6.0	10.0	5.0	0.5	GFM-0506-05
5.0		6.0	10.0	6.0	0.5	GFM-0506-06
5.0		6.0	10.0	15.3	0.5	GFM-0506-15
5.0		7.0	11.0	3.5	1.0	GFM-0507-03
5.0		7.0	11.0	4.0	1.0	GFM-0507-04
5.0		7.0	11.0	5.0	1.0	GFM-0507-05
5.0	+0.020	7.0	11.0	7.0	1.0	GFM-0507-07
5.0	+0.068	7.0	11.0	11.0	1.0	GFM-0507-11
5.0		7.0	11.0	14.5	1.0	GFM-0507-145
5.0		7.0	11.0	30.0	1.0	GFM-0507-30
5.0		7.0	9.5	5.0	1.0	GFM-050709-05
5.0		7.0	15.0	4.0	1.0	GFM-050715-04
6.0	+0.010	7.0	11.0	2.4	0.5	GFM-0607-024
6.0	+0.040	7.0	11.0	4.5	0.5	GFM-0607-045

³⁾ after pressfit. Testing methods ► Page 75

Order key

Type	Dimensions
G F M	-0304-02
iglidur® material	Form F
	Metric
	Inner-Ø d1 [mm]
	Outer-Ø d2 [mm]
	Length b1 [mm]

i Dimensions according to ISO 3547-1 and special dimensions

d1	d1- Tolerance ³⁾	d2	d3 d13	b1 h13	b2 -0.14	Part No.
6.0	+0.010	7.0	11.0	6.0	0.5	GFM-0607-06
6.0	+0.040	7.0	11.0	10.0	0.5	GFM-0607-10
6.0		8.0	12.0	2.5	1.0	GFM-0608-025
6.0		8.0	12.0	4.0	1.0	GFM-0608-04
6.0		8.0	12.0	4.8	1.0	GFM-0608-048
6.0		8.0	12.0	5.0	1.0	GFM-0608-05
6.0		8.0	12.0	6.0	1.0	GFM-0608-06
6.0	+0.020	8.0	12.0	7.0	1.0	GFM-0608-07
6.0	+0.068	8.0	12.0	8.0	1.0	GFM-0608-08
6.0		8.0	12.0	10.0	1.0	GFM-0608-10
6.0		8.0	12.0	25.0	1.0	GFM-0608-25
6.0		8.0	12.0	35.0	1.0	GFM-0608-35
6.0		8.0	14.0	2.8	1.0	GFM-060814-028
6.0		8.0	14.0	12.0	1.0	GFM-060814-12
7.0		8.0	12.0	1.7	0.5	GFM-0708-017
7.0	+0.013	8.0	12.0	3.0	0.5	GFM-0708-03
7.0	+0.049	8.0	12.0	6.0	0.5	GFM-0708-06
7.0		8.0	12.0	8.0	0.5	GFM-0708-08
7.0		9.0	15.0	3.5	1.0	GFM-0709-035
7.0		9.0	15.0	6.0	1.0	GFM-0709-06
7.0	+0.025	9.0	15.0	10.0	1.0	GFM-0709-10
7.0	+0.083	9.0	15.0	12.0	1.0	GFM-0709-12
7.0		9.0	19.0	10.0	1.0	GFM-070919-10
8.0		9.0	15.0	3.0	0.5	GFM-0809-03
8.0		9.0	13.0	3.5	0.5	GFM-0809-035
8.0	+0.013	9.0	13.0	5.5	0.5	GFM-0809-055
8.0	+0.049	9.0	13.0	8.0	0.5	GFM-0809-08
8.0		9.0	13.0	12.0	0.5	GFM-0809-12

Dimensions [mm]

d1	d1- Tolerance ³⁾	d2	d3 d13	b1 h13	b2 -0.14	Part No.
8.0		10.0	15.0	3.0	1.0	GFM-0810-03
8.0		10.0	15.0	4.0	1.0	GFM-0810-04
8.0		10.0	15.0	5.5	1.0	GFM-0810-05
8.0		10.0	15.0	6.5	1.0	GFM-0810-065
8.0		10.0	15.0	7.5	1.0	GFM-0810-07
8.0	+0.025	10.0	15.0	9.5	1.0	GFM-0810-09
8.0	+0.083	10.0	15.0	10.0	1.0	GFM-0810-10
8.0		10.0	14.0	11.0	1.0	GFM-0810-11
8.0		10.0	15.0	15.0	1.0	GFM-0810-15
8.0		10.0	15.0	25.0	1.0	GFM-0810-25
8.0		10.0	15.0	30.0	1.0	GFM-0810-30
8.0		10.0	12.0	12.5	1.0	GFM-081012-125
8.0		10.0	13.0	8.0	1.0	GFM-081013-08
8.0	+0.040 +0.098	10.0	14.0	5.0	1.0	GFM-081014-05
8.0	+0.025	10.0	14.0	6.0	1.0	GFM-081014-06
8.0	+0.083	10.0	14.0	8.0	1.0	GFM-081014-08
8.0	+0.040 +0.098	10.0	14.0	10.0	1.0	GFM-081014-10
8.0		10.0	16.0	11.5	1.5	GFM-081016-11
8.0	+0.025	10.0	16.0	15.0	1.5	GFM-081016-15
8.0	+0.083	10.0	17.0	15.0	1.0	GFM-081017-15
8.0		10.0	18.0	3.0	1.0	GFM-081018-03
8.0	+0.040	12.0	16.0	6.0	2.0	GFM-0812-06
8.0	+0.130	12.0	21.0	8.0	2.0	GFM-081221-08
9.0	+0.013	10.0	15.0	6.5	0.5	GFM-0910-065
9.0	+0.049	10.0	15.0	17.5	0.5	GFM-0910-17
10.0	+0.013 +0.046	11.0	20.0	3.5	-	GFM-1011-03
10.0	+0.013	11.0	15.0	4.4	0.5	GFM-1011-044
10.0	+0.049	11.0	15.0	10.0	0.5	GFM-1011-10
10.0		12.0	18.0	3.5	1.0	GFM-1012-035
10.0		12.0	18.0	4.0	1.0	GFM-1012-04
10.0		12.0	18.0	5.0	1.0	GFM-1012-05
10.0		12.0	18.0	6.0	1.0	GFM-1012-06
10.0		12.0	18.0	7.0	1.0	GFM-1012-07
10.0		12.0	18.0	9.0	1.0	GFM-1012-09
10.0	+0.025	12.0	18.0	10.0	1.0	GFM-1012-10
10.0	+0.083	12.0	18.0	12.0	1.0	GFM-1012-12
10.0		12.0	18.0	15.0	1.0	GFM-1012-15
10.0		12.0	18.0	17.0	1.0	GFM-1012-17
10.0		12.0	15.0	12.0	1.0	GFM-101215-12
10.0		12.0	16.0	6.0	1.0	GFM-101216-06
10.0		12.0	16.0	9.0	1.0	GFM-101216-09
10.0		12.0	16.0	15.0	1.0	GFM-101216-15

³⁾ after pressfit. Testing methods ► Page 75

d1	d1- Tolerance ³⁾	d2	d3 d13	b1 h13	b2 -0.14	Part No.
11.0		12.0	16.0	6.0	0.5	GFM-1112-06
12.0	+0.016	13.0	17.0	3.0	0.5	GFM-1213-03
12.0	+0.059	13.0	15.0	12.0	0.5	GFM-121315-12
12.0		13.0	17.0	12.0	0.5	GFM-1213-12
12.0		14.0	20.0	3.0	1.0	GFM-1214-03
12.0		14.0	20.0	5.0	1.0	GFM-1214-05
12.0		14.0	20.0	6.0	1.0	GFM-1214-06
12.0		14.0	20.0	7.0	1.0	GFM-1214-07
12.0		14.0	20.0	9.0	1.0	GFM-1214-09
12.0		14.0	20.0	10.0	1.0	GFM-1214-10
12.0		14.0	20.0	11.0	1.0	GFM-1214-11
12.0		14.0	20.0	12.0	1.0	GFM-1214-12
12.0		14.0	20.0	15.0	1.0	GFM-1214-15
12.0		14.0	20.0	17.0	1.0	GFM-1214-17
12.0		14.0	20.0	20.0	1.0	GFM-1214-20
12.0		14.0	20.0	24.0	1.0	GFM-1214-24
12.0		14.0	20.0	31.0	1.0	GFM-1214-31
12.0		14.0	20.0	40.0	1.0	GFM-1214-40
12.0	+0.032	14.0	18.0	4.0	1.0	GFM-121418-04
12.0	+0.102	14.0	18.0	8.0	1.0	GFM-121418-08
12.0		14.0	18.0	10.0	1.0	GFM-121418-10
12.0		14.0	18.0	12.0	1.0	GFM-121418-12
12.0		14.0	18.0	15.0	1.0	GFM-121418-15
12.0		14.0	18.0	20.0	1.0	GFM-121418-20
13.0		15.0	22.0	6.0	1.0	GFM-1315-06
13.0		15.0	22.0	8.0	1.0	GFM-1315-08
13.0		15.0	22.0	40.0	1.0	GFM-131522-40
14.0		16.0	22.0	3.0	1.0	GFM-1416-03
14.0		16.0	22.0	4.0	1.0	GFM-1416-04
14.0		16.0	22.0	6.0	1.0	GFM-1416-06
14.0		16.0	22.0	8.0	1.0	GFM-1416-08
14.0		16.0	22.0	10.0	1.0	GFM-1416-10
14.0		16.0	22.0	12.0	1.0	GFM-1416-12
14.0		16.0	22.0	17.0	1.0	GFM-1416-17
14.0		16.0	22.0	21.0	1.0	GFM-1416-21
15.0		16.0	20.0	2.0	0.5	GFM-1516-02
15.0	+0.016	16.0	20.0	2.5	0.5	GFM-1516-025
15.0	+0.059	16.0	20.0	3.0	0.5	GFM-1516-03
15.0		16.0	20.0	15.0	0.5	GFM-1516-15
15.0		17.0	23.0	4.0	1.0	GFM-1517-04
15.0		17.0	23.0	4.5	1.0	GFM-1517-045
15.0	+0.032	17.0	23.0	5.0	1.0	GFM-1517-05
15.0	+0.102	17.0	23.0	9.0	1.0	GFM-1517-09
15.0		17.0	23.0	12.0	1.0	GFM-1517-12
15.0		17.0	23.0	17.0	1.0	GFM-1517-17

Dimensions [mm]

d1	d1- Tolerance ³⁾	d2	d3	b1	b2	Part No.	d1	d1- Tolerance ³⁾	d2	d3	b1	b2	Part No.
		d13	d13	h13	-0.14				d13	h13	-0.14		
15.0		17.0	23.0	20.0	1.0	GFM-1517-20	25.0		27.0	32.0	7.0	-	GFM-2527-07
15.0		18.0	24.0	32.0	1.5	GFM-151824-32	25.0		27.0	32.0	48.0	1.0	GFM-2527-48
16.0		18.0	24.0	4.0	1.0	GFM-1618-04	25.0		28.0	35.0	11.5	1.5	GFM-2528-11
16.0		18.0	24.0	5.0	1.0	GFM-1618-05	25.0		28.0	35.0	16.5	1.5	GFM-2528-16
16.0		18.0	24.0	6.0	1.0	GFM-1618-06	25.0		28.0	35.0	21.5	1.5	GFM-2528-21
16.0		18.0	24.0	9.0	1.0	GFM-1618-09	25.0		28.0	30.0	10.0	1.5	GFM-252830-10
16.0		18.0	24.0	12.0	1.0	GFM-1618-12	26.0		30.0	37.0	12.0	2.0	GFM-2630-12
16.0		18.0	24.0	16.0	1.0	GFM-1618-16	27.0		30.0	38.0	20.0	1.5	GFM-2730-20
16.0		18.0	24.0	17.0	1.0	GFM-1618-17	28.0		30.0	36.0	10.0	1.0	GFM-2830-10
16.0		18.0	24.0	21.0	1.0	GFM-1618-21	28.0		30.0	35.0	36.0	1.0	GFM-2830-36
17.0		19.0	25.0	9.0	1.0	GFM-1719-09	28.0		30.0	35.0	48.0	1.0	GFM-2830-48
17.0	+0.032	19.0	25.0	16.0	1.0	GFM-1719-16	28.0		30.0	36.0	31.0	1.0	GFM-283036-31
17.0	+0.102	19.0	25.0	25.0	1.0	GFM-1719-25	28.0	+0.040	32.0	39.0	20.0	2.0	GFM-283239-20
18.0		20.0	26.0	4.0	1.0	GFM-1820-04	28.0	+0.124	32.0	50.0	35.0	2.0	GFM-283250-35
18.0		20.0	26.0	6.0	1.0	GFM-1820-06	30.0		31.0	36.0	20.0	0.5	GFM-3031-20
18.0		20.0	26.0	9.0	1.0	GFM-1820-09	30.0		31.0	35.0	30.0	0.5	GFM-3031-30
18.0		20.0	26.0	11.0	1.0	GFM-1820-11	30.0		32.0	37.0	4.0	1.0	GFM-3032-04
18.0		20.0	26.0	12.0	1.0	GFM-1820-12	30.0		32.0	37.0	12.0	1.0	GFM-3032-12
18.0		20.0	26.0	17.0	1.0	GFM-1820-17	30.0		32.0	37.0	17.5	1.0	GFM-3032-17
18.0		20.0	26.0	22.0	1.0	GFM-1820-22	30.0		32.0	37.0	22.0	1.0	GFM-3032-22
18.0		20.0	26.0	30.0	1.0	GFM-1820-30	30.0		34.0	42.0	9.0	2.0	GFM-3034-09
18.0		20.0	26.0	32.0	1.0	GFM-1820-32	30.0		34.0	42.0	16.0	2.0	GFM-3034-16
18.0		20.0	22.0	6.0	1.0	GFM-182022-06	30.0		34.0	42.0	20.0	2.0	GFM-3034-20
18.0		22.0	26.0	28.0	2.0	GFM-1822-28	30.0		34.0	42.0	26.0	2.0	GFM-3034-26
20.0	+0.020	21.0	26.0	3.5	0.5	GFM-2021-035	30.0		34.0	42.0	37.0	2.0	GFM-3034-37
20.0	+0.072	21.0	25.0	15.0	0.5	GFM-2021-15	30.0		34.0	40.0	10.0	2.0	GFM-303440-10
20.0		21.0	25.0	20.0	0.5	GFM-2021-20	32.0		36.0	40.0	16.0	2.0	GFM-3236-16
20.0		23.0	30.0	7.0	1.5	GFM-2023-07	32.0		36.0	40.0	26.0	2.0	GFM-3236-26
20.0		23.0	30.0	11.5	1.5	GFM-2023-11	34.0		38.0	50.0	35.0	2.0	GFM-343850-35
20.0		23.0	30.0	16.5	1.5	GFM-2023-16	35.0		39.0	47.0	5.8	2.0	GFM-3539-058
20.0		23.0	30.0	21.5	1.5	GFM-2023-21	35.0		39.0	47.0	7.0	2.0	GFM-3539-07
20.0		23.0	26.0	7.0	1.5	GFM-202326-07	35.0		39.0	47.0	12.0	2.0	GFM-3539-12
20.0		23.0	26.0	21.5	1.5	GFM-202326-21	35.0		39.0	47.0	16.0	2.0	GFM-3539-16
20.0		23.0	28.0	15.0	1.5	GFM-202328-15	35.0		39.0	47.0	26.0	2.0	GFM-3539-26
20.0	+0.040	23.0	29.0	20.0	1.5	GFM-202329-20	35.0	+0.050	39.0	47.0	36.0	2.0	GFM-3539-36
22.0	+0.124	24.0	30.0	25.0	1.0	GFM-2224-25	38.0	+0.150	42.0	54.0	22.0	2.0	GFM-3842-22
22.0		25.0	29.0	4.5	1.5	GFM-222529-045	40.0		44.0	52.0	7.0	2.0	GFM-4044-07
22.0		25.0	30.0	21.5	1.5	GFM-222530-215	40.0		44.0	52.0	14.0	2.0	GFM-4044-14
22.0		25.0	30.0	25.0	1.5	GFM-222530-25	40.0		44.0	52.0	20.0	2.0	GFM-4044-20
22.0		25.0	35.0	31.5	1.5	GFM-222535-315	40.0		44.0	52.0	30.0	2.0	GFM-4044-30
24.0		27.0	32.0	7.0	1.5	GFM-2427-07	40.0		44.0	52.0	40.0	2.0	GFM-4044-40
24.0		27.0	32.0	10.5	1.5	GFM-2427-10	40.0		44.0	52.0	50.0	2.0	GFM-4044-50
25.0	+0.020	26.0	30.0	25.0	0.5	GFM-2526-25	40.0		46.0	50.0	20.0	2.0	GFM-4046-20
	+0.072						42.0		46.0	53.0	19.0	2.0	GFM-4246-19

³⁾ after pressfit. Testing methods ► Page 75

Dimensions [mm]

d1	d1- Tolerance ³⁾	d2	d3	b1	b2	Part No.	d1	d1- Tolerance ³⁾	d2	d3	b1	b2	Part No.
		d13	d13	h13	-0.14				d13	h13	-0.14		
45.0		50.0	58.0	25.0	2.0	GFM-4550-25	80.0	+0.060	85.0	93.0	50.0	2.5	GFM-8085-50
45.0		50.0	58.0	30.0	2.0	GFM-4550-30	80.0	+0.180	85.0	93.0	100.0	2.5	GFM-8085-100
45.0		50.0	58.0	50.0	2.0	GFM-4550-50	85.0		90.0	98.0	100.0	2.5	GFM-8590-100
50.0	+0.050	55.0	63.0	7.0	2.0	GFM-5055-07	90.0		95.0	103.0	100.0	2.5	GFM-9095-100
50.0	+0.150	55.0	63.0	10.0	2.0	GFM-5055-10	95.0		100.0	108.0	100.0	2.5	GFM-95100-100
50.0		55.0	63.0	25.0	2.0	GFM-5055-25	100.0	+0.072	105.0	113.0	42.5	2.5	GFM-100105-425
50.0		55.0	63.0	40.0	2.0	GFM-5055-40	100.0	+0.212	105.0	113.0	100.0	2.5	GFM-100105-100
50.0		55.0	63.0	50.0	2.0	GFM-5055-50	110.0		115.0	123.0	100.0	2.5	GFM-110115-100
60.0		65.0	73.0	7.0	2.0	GFM-6065-07	120.0		125.0	133.0	80.0	2.5	GFM-120125-80
60.0		65.0	73.0	22.0	2.0	GFM-6065-22	120.0		125.0	133.0	100.0	2.5	GFM-120125-100
60.0		65.0	73.0	30.0	2.0	GFM-6065-30	125.0		130.0	138.0	100.0	2.5	GFM-125130-100
60.0		65.0	73.0	50.0	2.0	GFM-6065-50	130.0		135.0	143.0	100.0	2.5	GFM-130135-100
60.0	+0.060	65.0	80.0	62.0	2.0	GFM-606580-62	140.0	+0.085	145.0	153.0	100.0	2.5	GFM-140145-100
65.0	+0.180	70.0	78.0	50.0	2.0	GFM-6570-50	150.0	+0.245	155.0	163.0	40.0	2.5	GFM-150155-40
70.0		75.0	83.0	50.0	2.0	GFM-7075-50	150.0		155.0	163.0	100.0	2.5	GFM-150155-100
70.0		75.0	83.0	85.5	2.0	GFM-7075-855							
75.0		80.0	88.0	50.0	2.0	GFM-7580-50	195.0	+0.100	205.0	240.0	65.0	5.0	GFM-195205240-65
								+0.285					

³⁾ after pressfit. Testing methods ► Page 75



Don't find your size?

Do you need another length, other dimensions or tolerances? You need a particular design or alternative for your application? Please call us. igus® listens to your needs and provides you a solution in a very short time.

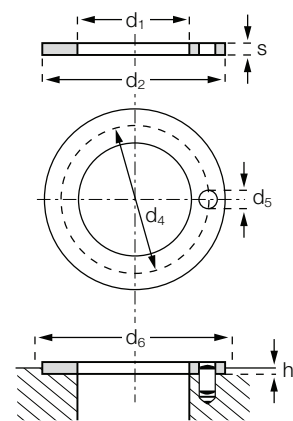


Even more dimensions from stock

More than 300 dimensions are now available. Search online for your required bearing.

► www.igus.eu/iglidur-specialbearings

Thrust washer (Form T)



Order key

Type Dimensions

G T M -04 08-005

iglidur® material	Form T	Metric	Inner-Ø d1 [mm]	Outer-Ø d2 [mm]	Thickness s [mm]
-------------------	--------	--------	-----------------	-----------------	------------------

i Dimensions according to ISO 3547-1 and special dimensions

Dimensions [mm]

d1	d2	s	d4	d5	h	d6	Part No.
+0.25	-0.25	-0.05	-0.12 +0.12	+0.375 +0.125	+0.2 -0.2	+0.12	
4.0	8.0	0.5	4)	4)	0.2	8.0	GTM-0408-005
4.0	9.0	0.6	4)	4)	0.3	9.0	GTM-0409-006
4.0	9.0	1.6	4)	4)	0.3	9.0	GTM-0409-016
4.0	10.0	0.5	4)	4)	0.2	10.0	GTM-0410-005
4.0	11.0	0.5 (-0.06)	4)	4)	0.2	11.0	GTM-0411-005
5.0	9.5	0.6	4)	4)	0.3	9.5	GTM-0509-006
6.0	11.0	1.0	4)	4)	0.7	11.0	GTM-0611-010
6.0	12.0	1.5	4)	4)	1.0	12.0	GTM-0612-015
6.0	15.0	1.5	4)	4)	1.0	15.0	GTM-0615-015
6.0	20.0	1.5	13.0	1.5	1.0	20.0	GTM-0620-015
7.0	12.0	0.5	4)	4)	0.2	12.0	GTM-0712-005
7.0	13.0	0.5	4)	4)	0.2	13.0	GTM-0713-005
8.0	15.0	0.5	4)	4)	0.2	15.0	GTM-0815-005
8.0	15.0	1.5	4)	4)	1.0	15.0	GTM-0815-015
8.0	18.0	1.0	4)	4)	0.7	18.0	GTM-0818-010
8.0	18.0	1.5	13.0	1.5	1.0	18.0	GTM-0818-015
8.0	18.0	2.0	4)	4)	1.5	18.0	GTM-0818-020
9.0	13.0	1.0	4)	4)	0.7	13.0	GTM-0913-010
9.0	18.0	1.5	13.5	1.5	1.0	18.0	GTM-0918-015
10.0	17.8	0.5	4)	4)	0.2	17.8	GTM-1018-005
10.0	18.0	1.0	4)	4)	0.7	18.0	GTM-1018-010
10.0	18.0	1.5	4)	4)	1.0	18.0	GTM-1018-015
10.0	18.0	2.0	4)	4)	1.5	18.0	GTM-1018-020
10.0	20.0	1.5	4)	4)	0.7	20.0	GTM-1020-015
11.0	15.0	1.0	4)	4)	0.7	15.0	GTM-1115-010
11.0	27.0	0.5	4)	4)	0.2	27.0	GTM-1127-005
12.0	24.0	1.5	18.0	1.5	1.0	24.0	GTM-1224-015
12.0	30.0	1.5	4)	4)	1.0	30.0	GTM-1230-015
14.0	20.0	1.5	4)	4)	1.0	20.0	GTM-1420-015
14.0	26.0	1.5	20.0	2.0	1.0	26.0	GTM-1426-015

4) Design without fixing bore

Thrust bearings

Dimensions [mm]

d1	d2	s	d4	d5	h	d6	Part No.
+0.25	-0.25	-0.05	-0.12 +0.12	+0.375 +0.125	+0.2 -0.2	+0.12	
15.0	22.0	0.8	4)	4)	0.5	22.0	GTM-1522-008
15.0	19.0	0.8	4)	4)	0.5	19.0	GTM-1519-008
15.0	24.0	1.5	19.5	1.5	1.0	24.0	GTM-1524-015
15.0	24.0	2.75	4)	4)	2.0	24.0	GTM-1524-0275
16.0	28.0	1.0	4)	4)	0.7	28.0	GTM-1628-010
16.0	30.0	1.5	22.0	2.0	1.0	30.0	GTM-1630-015
18.0	32.0	1.5	25.0	2.0	1.0	32.0	GTM-1832-015
20.0	36.0	1.5	28.0	3.0	1.0	36.0	GTM-2036-015
22.0	30.0	1.5	4)	4)	1.0	30.0	GTM-2230-015
22.0	38.0	1.5	30.0	3.0	1.0	38.0	GTM-2238-015
24.0	42.0	1.5	33.0	3.0	1.0	42.0	GTM-2442-015
26.0	44.0	1.5	35.0	3.0	1.0	44.0	GTM-2644-015
28.5	35.8	0.5	4)	4)	0.2	35.8	GTM-2835-005
28.0	48.0	1.5	38.0	4.0	1.0	48.0	GTM-2848-015
32.0	45.8	1.0	4)	4)	0.7	45.8	GTM-3246-010
32.0	54.0	1.5	43.0	4.0	1.0	54.0	GTM-3254-015
38.0	62.0	1.5	50.0	4.0	1.0	62.0	GTM-3862-015
42.0	66.0	1.5	54.0	4.0	1.0	66.0	GTM-4266-015
48.0	60.0	2.0	61.0	4.0	1.5	74.0	GTM-4860-020
48.0	74.0	2.0	61.0	4.0	1.5	74.0	GTM-4874-020
52.0	78.0	2.0	65.0	4.0	1.5	78.0	GTM-5278-020
52.5	69.0	2.0	4)	4)	1.5	69.0	GTM-52569-020
62.0	78.0	2.0	4)	4)	1.5	78.0	GTM-6278-020
62.0	90.0	1.0	4)	4)	0.7	90.0	GTM-6290-010
62.0	90.0	2.0	76.0	4.0	1.5	90.0	GTM-6290-020
68.0	81.0	2.0	4)	4)	1.5	81.0	GTM-6881-020
78.0	114.0	1.5	4)	4)	1.0	114.0	GTM-78114-015
80.5	114.0	1.5	4)	4)	1.0	114.0	GTM-80114-015

4) Design without fixing bore



Even more dimensions from stock

More than 300 dimensions are now available. Search online for your required bearing.

► www.igus.eu/iglidur-specialbearings